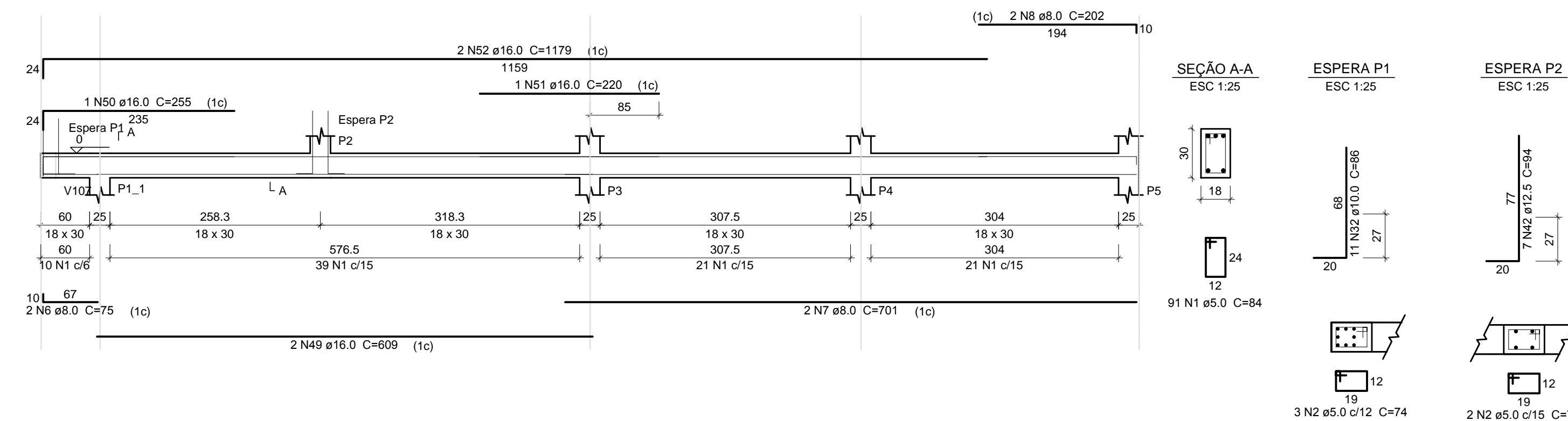


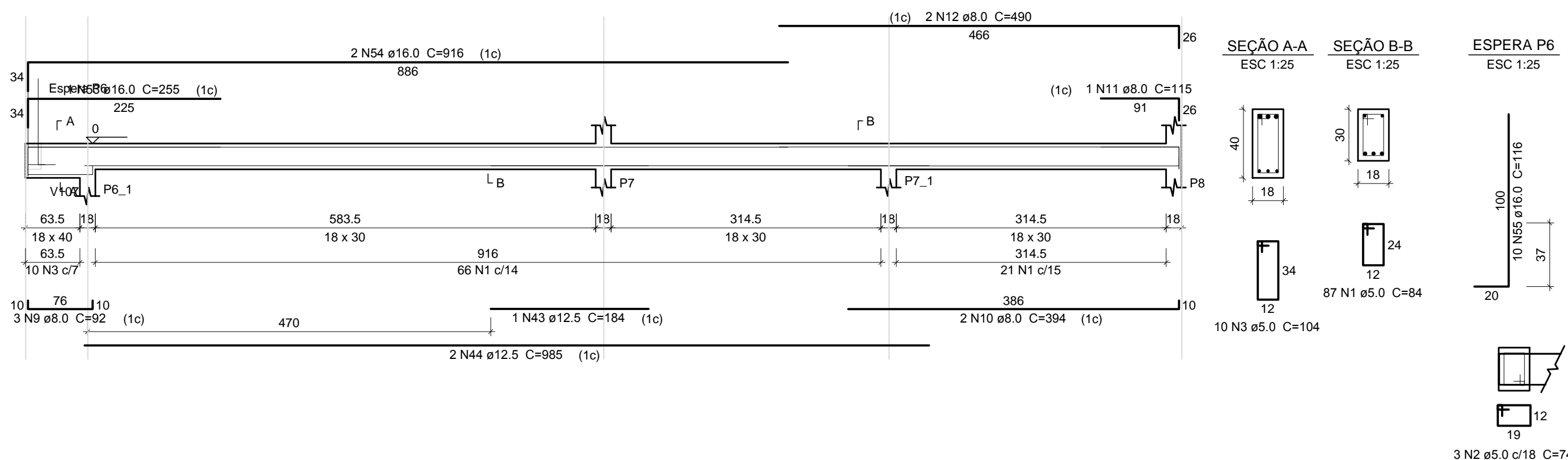
V101

ESC 1:50



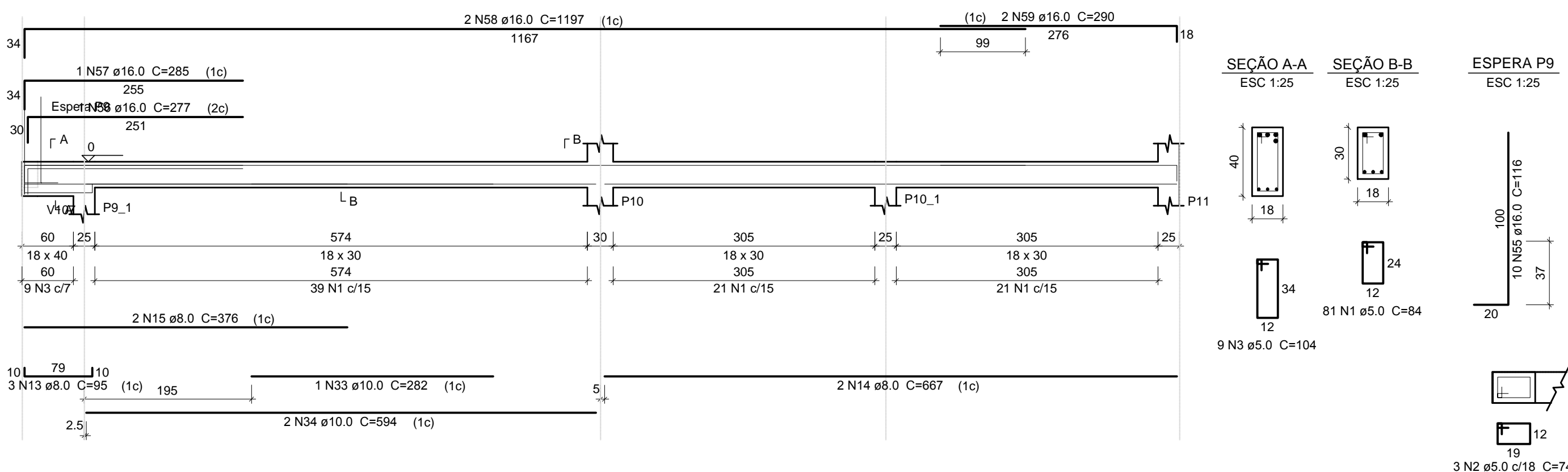
V102

ESC 1:50



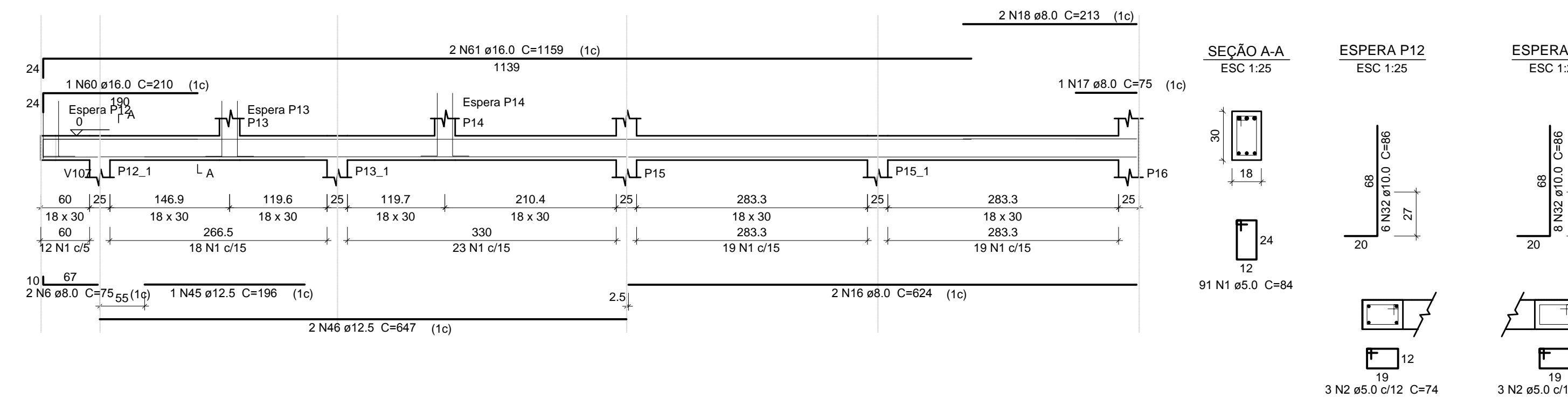
V103

ESC 1:50



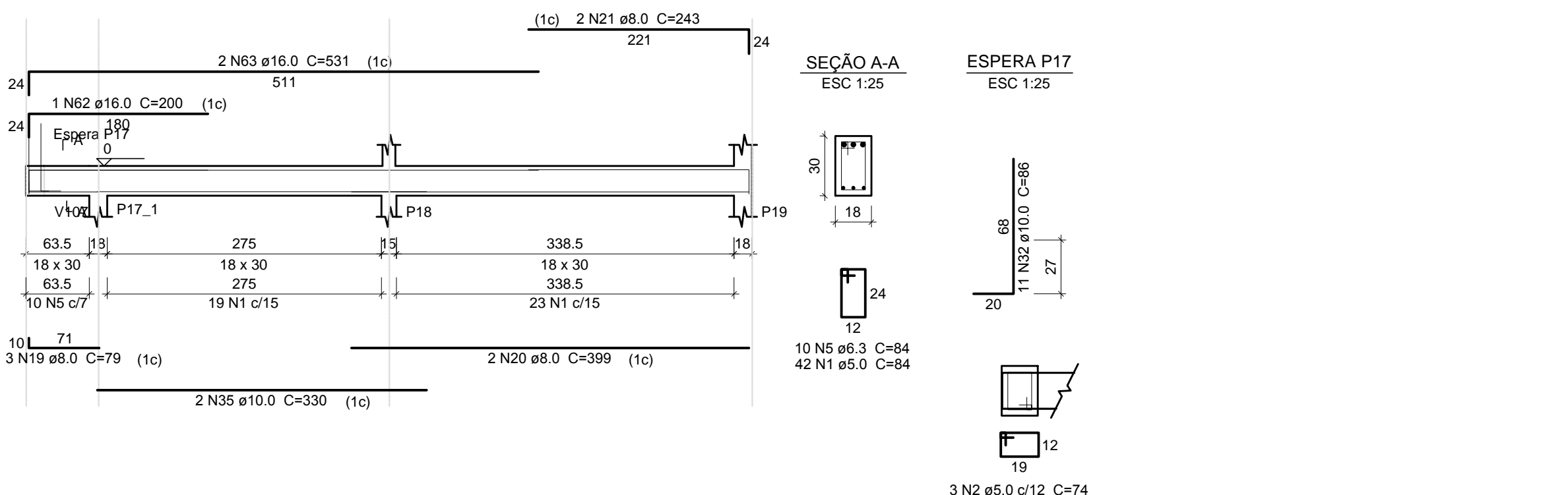
V104

ESC 1:50



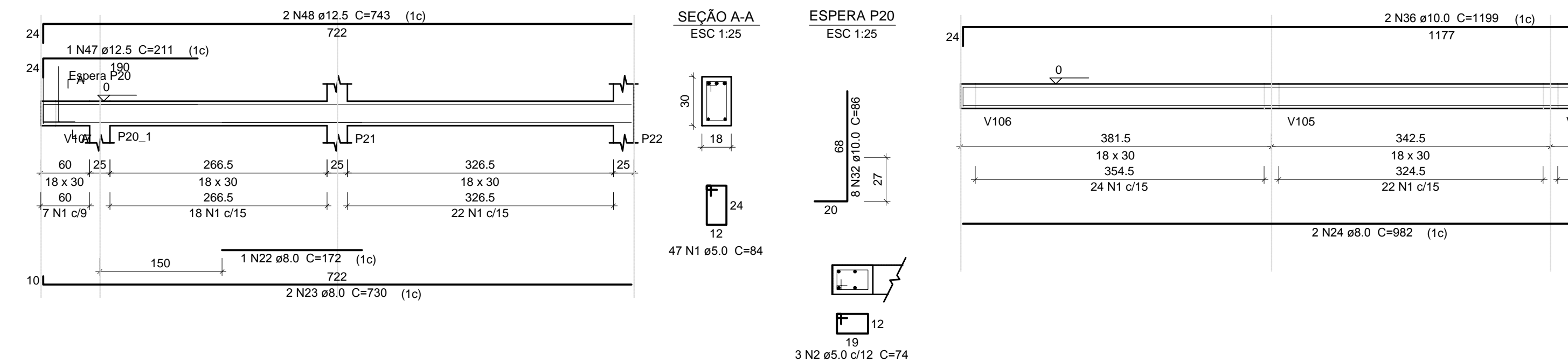
V105

ESC 1:50



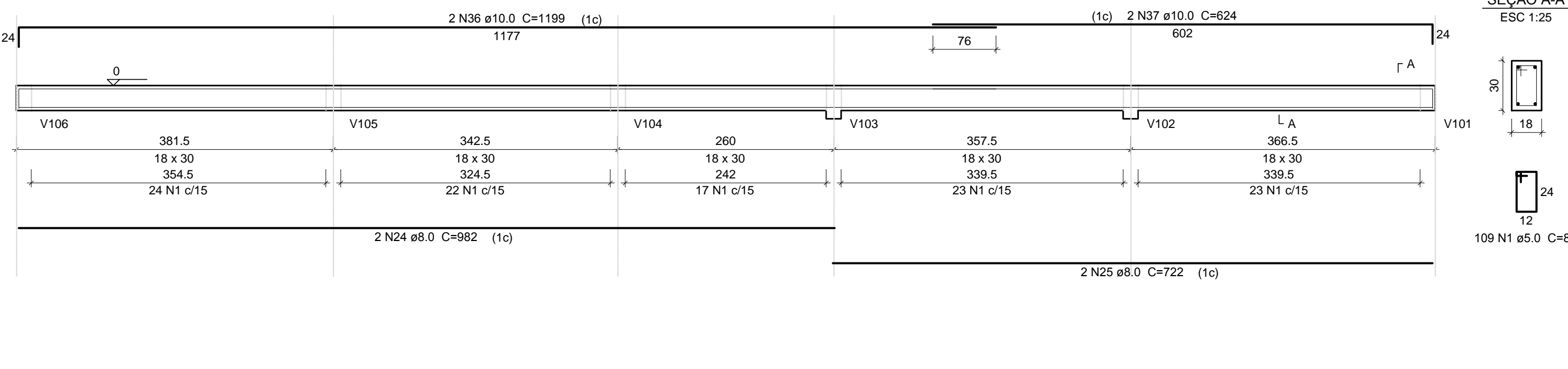
V106

ESC 1:50



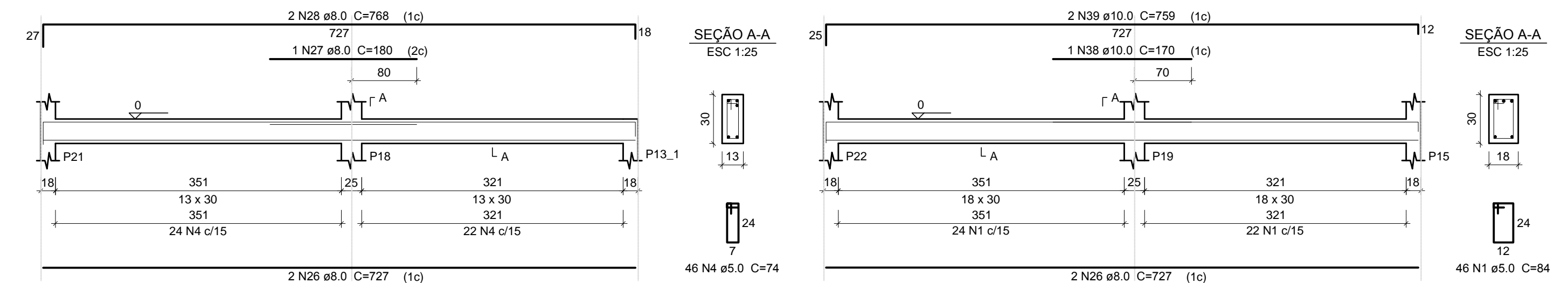
V107

ESC 1:50



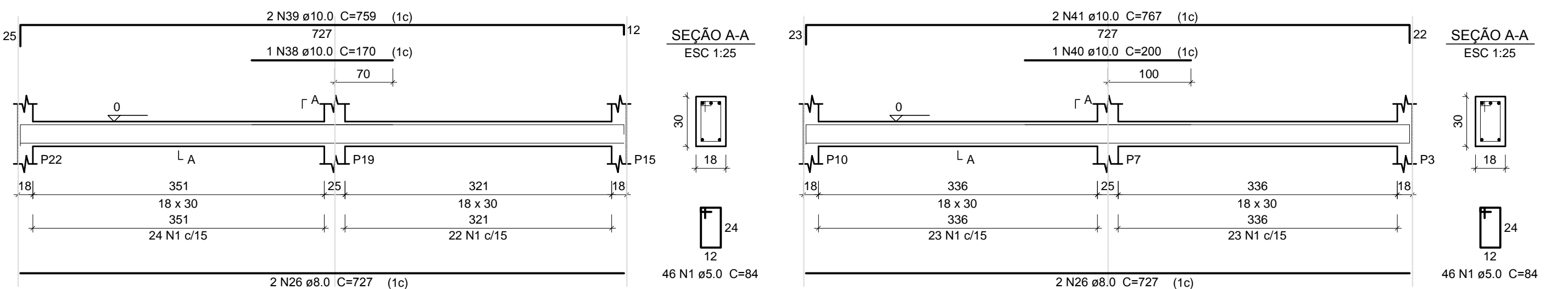
V108

ESC 1:50



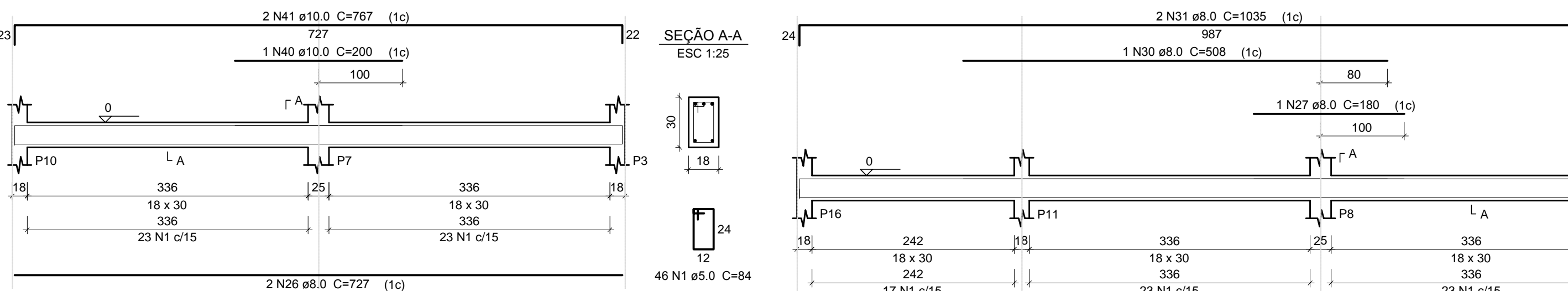
V109

ESC 1:50



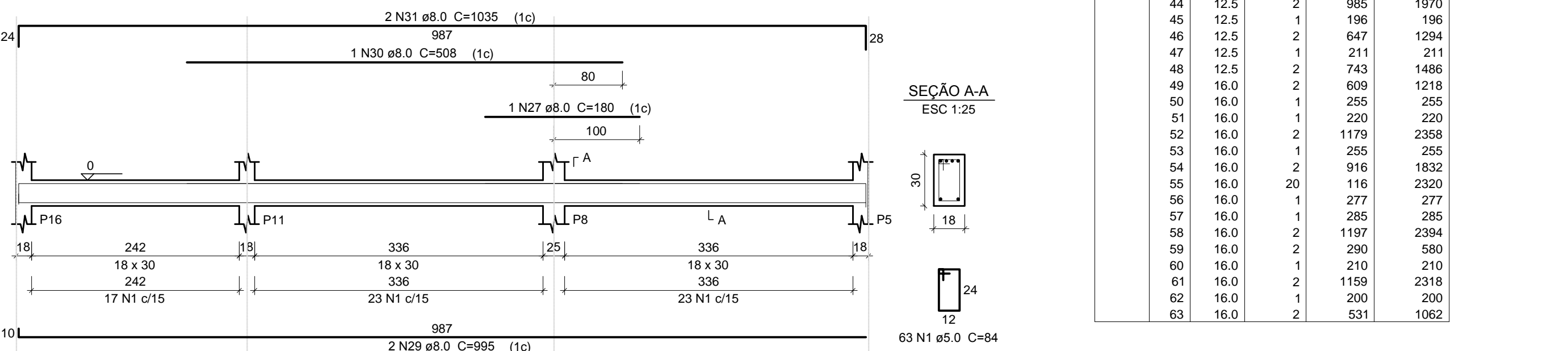
V110

ESC 1:50



V111

ESC 1:50



Relação do aço

V101
V104
V107
V110

V102
V105
V108
V111

V103
V106
V109

Resumo do aço

AÇO	N	DIAM (mm)	QUANT	C.UNIT (cm)	C.TOTAL (cm)	AÇO	DIAM (mm)	C.TOTAL (m)	PESO + 10 % (kg)
CA60	1	5.0	703	84	59052	CA50	6.3	8.4	2.3
	2	5.0	25	74	1850		8.0	257.8	111.9
	3	5.0	19	104	1976		10.0	129.9	88
	4	5.0	46	74	3404		12.5	66.6	70.5
CA50	5	6.3	10	84	840		16.0	157.9	274
	6	8.0	4	75	300	CA60	5.0	662.9	112.4
	7	8.0	2	701	1402				
	8	8.0	2	202	404	PESO TOTAL (kg)			
	9	8.0	3	92	276				
	10	8.0	2	394	788	CA50	546.7		
	11	8.0	1	115	115	CA60	112.4		
	12	8.0	2	490	980				
	13	8.0	3	95	285				
	14	8.0	2	667	1334				
	15	8.0	2	376	752				
	16	8.0	2	624	1248				
	17	8.0	1	75	75				
	18	8.0	2	213	426				
	19	8.0	3	79	237				
	20	8.0	2	399	798				
	21	8.0	2	243	486				
	22	8.0	1	172	172				
	23	8.0	2	730	1460				
	24	8.0	2	982	1964				
	25	8.0	2	722	1444				
	26	8.0	6	727	4362				
	27	8.0	2	180	360				
	28	8.0	2	768	1536				
	29	8.0	2	995	1990				
	30	8.0	1	508	508				
	31	8.0	2	1035	2070				
	32	10.0	44	86	3784				
	33	10.0	1	282	282				
	34	10.0	2	594	1188				
	35	10.0	2	330	660				
	36	10.0	2	1199	2398				
	37	10.0	2	624	1248				
	38	10.0	1	170	170				
	39	10.0	2	759	1518				
	40	10.0	1	200	200				
	41	10.0	2	767	1534				
	42	12.5	14	94	1316				
	43	12.5	1	184	184				
	44	12.5	2	985	1970				
	45	12.5	1	196	196				
	46	12.5	2	647	1294				
	47	12.5	1	211	211				
	48	12.5	2	743	1486				
	49	16.0	2	609	1218				
	50	16.0	1	255	255				
	51	16.0	1	220	220				
	52	16.0	2	1179	2358				
	53	16.0	1	255	255				
	54	16.0	2	916	1832				
	55	16.0	20	116	2320				
	56	16.0	1	277	277				
	57	16.0	1	285	285				
	58	16.0	2	1197	2394				
	59	16.0	2	290	580				
	60	16.0	1	210	210				
	61	16.0	2	1159	2318				
	62	16.0	1	200	200				
	63	16.0	2	531	1062				